

Using Data: Where to Start?

January 26, 2023



Welcome



Dr. Adam Cibulka
Senior Manager – Analytics
Frontline Education

Key Challenges Districts are Facing Today

- **Resources** – What does our financial future look like in this ever-changing economic environment?
- **Logistics** – How will we organize our resources/teams and align them to our district goals to ensure student success?
- **Learning** – How are our student performing and meeting key metrics?

Addressing Issues of Equity and Early Intervention

Considerations in Forward Planning:

Equity – Do we see areas of disproportionality?

Access – Are we providing access to rigorous coursework for all students?

Early Intervention – How can we identify students needing support earlier?

Turning to Data and Analytics

Districts are using data and analytics to:

1. Ensure students receive high quality instruction and continue to meet learning goals.
2. Ensure staff are able deliver a rigorous experience for students to best prepare them for college, career, and life.
3. Ensure families and school board members are informed and are prioritizing that all students have the resources necessary to learn, are engaging in the district's learning environment and are staying on-track in meeting learning goals.

Introductions



Jennifer Bell-Ellwanger
President and CEO
Data Quality Campaign



Dr. Doug Wheeler
Superintendent
College Community School
District (Iowa)



Dr. CyLynn Braswell
Analytics Advisor
Frontline Education



Mona Guerra
Data Fellow
Mercedes ISD (Texas)

Top Takeaways: 2022 Superintendent Poll



98% of superintendents feel that if they had better access to information, they would be more confident in their abilities to make decisions for their district.



99% of superintendents feel that state data could be more useful. Relevant state data could be made more useful with tools to help superintendents act on the information and more training and ongoing support for analyzing, reporting, and communicating the data.



93% of superintendents have started collecting new data during the pandemic, and nearly all (94 percent) who have initiated new data collection agree: the new data is giving them useful information and insights.

What We've Heard: Public Opinion Polling

Superintendents: **98%** feel, if they had better access to information, they would be more confident in their abilities to make decisions for their district.

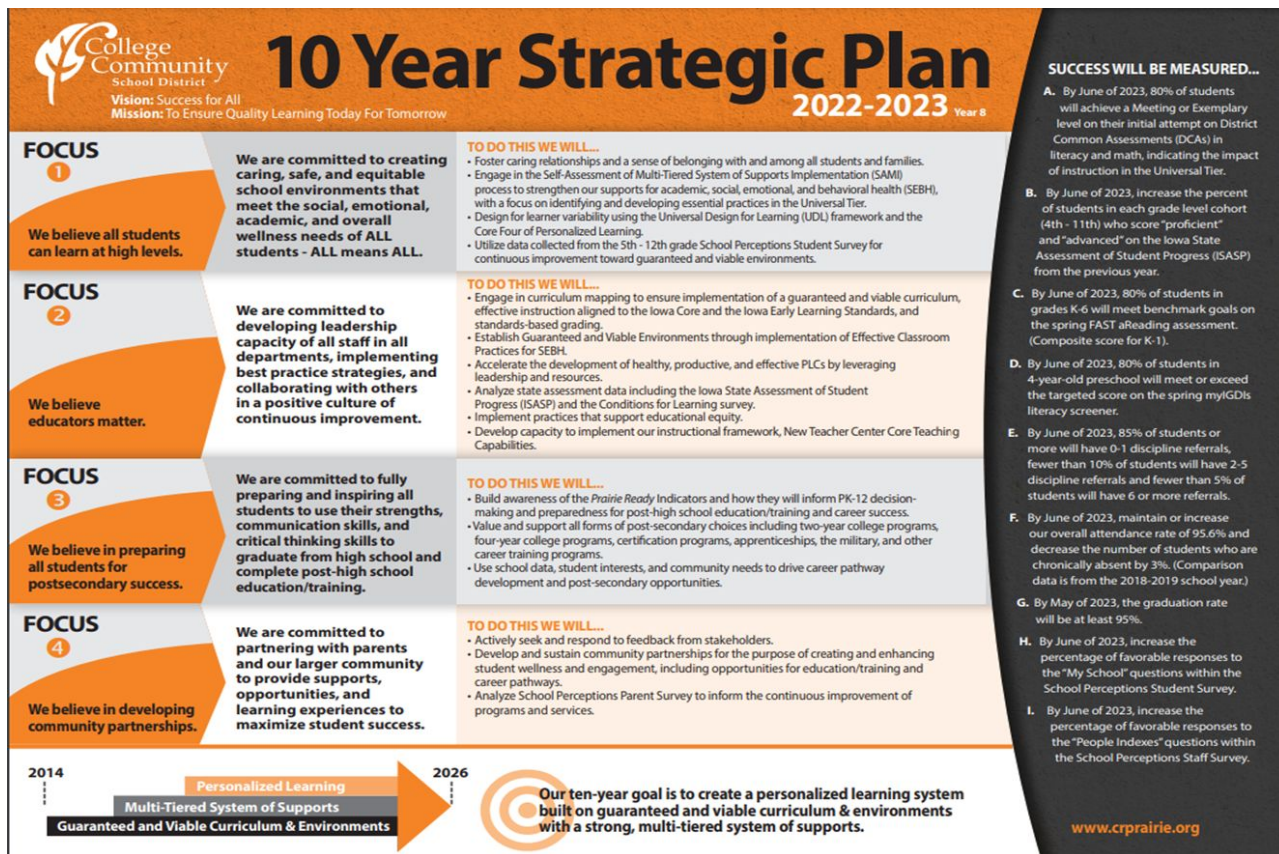
Parents: **34%** of parents know where to find all the information they need about their child's post-high school options.

Students: **Less than 50%** report getting **any** information from their school about whether they're meeting grade-level expectations, if they're on track to graduate from high school, or how much academic progress they've made this year.

Principals: **46%** said they know where to go to find all the data they need to understand how well their school prepares students for their post-high school education and careers.

**DQC 2021 and 2022 poll results in partnership with The Harris Poll*

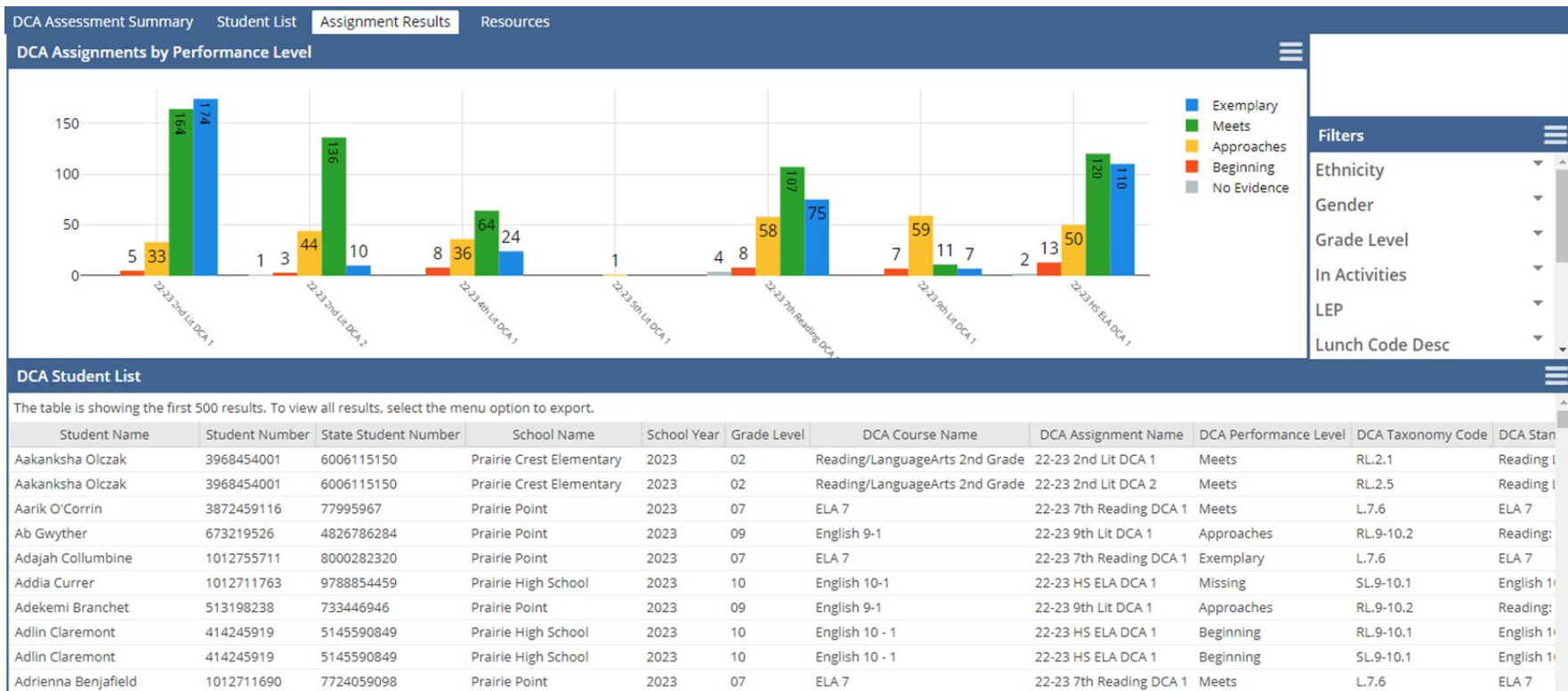
Using Data to Create and Monitor a Strategic Plan



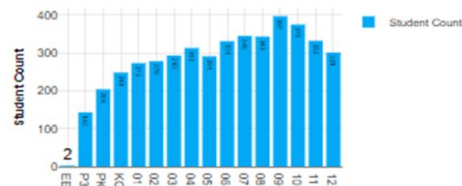
Monitoring Student Performance



Personalizing the Data



Active Students by Grade Level



Attendance Rate by Grade Level



Daily Attendance Rate

Run Date: 2023-01-18
Attendance Rate: 89.15%

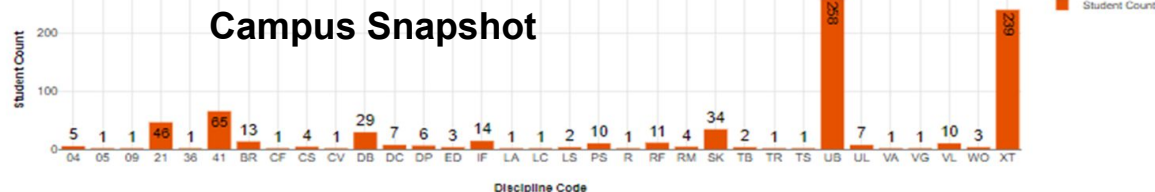
View Filters

No filters selected

Filters

- Chronic Absentee...
- Class Of
- Ethnicity
- Gender
- Grade Level
- LEP
- Low Income
- Race

Student Discipline by Code

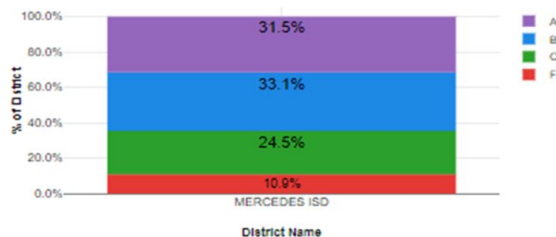


Campus Snapshot

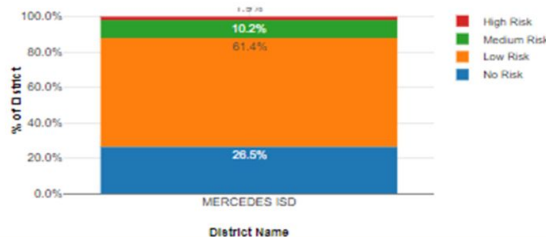
Discipline Look-up table

Discipline Code	Discipline Type
BR	BUS REFERRAL
CF	CONSUMPTION OF FOOD/DRINK CLS
CS	CONFLICT W/STUDENT
CV	CAMPUS VIOLATIONS
DB	DISRUPTIVE BEHAVIOR (21)
DC	DRESS CODE VIOLATION
DP	DRUG PARAPHERNALIA
ED	ELECTRONIC DEVICE/LASER POINT
IF	INVOLVED IN FIGHTING
LA	LOOK ALIKE WEAPON
LC	LACK OF COOPERATION
LS	LEFT SCHOOL WITHOUT PERMISSION
PS	PROBLEM WITH OTHER STUDENT
R	RUDE
RF	RUDE TO FACULTY
RM	REPEATED/PERSISTANT MISBEHAVIO
SK	SKIP CLASS
TB	THEFT UNDER \$500
TR	TRUANCY (Local skipping class
TS	THREAT/RETALIATE AGT STUD/STA
UB	UNACCEPTABLE BEHAVIOR
UL	UNACCEPTABLE LANGUAGE
VA	VANDALISM
VG	VULGAR GESTURE
VL	VULGAR LANGUAGE

Grades



EWS Whole School Tiers



CBA Data

		03	04	05	06	07	08	
Eduphoria - Subject	Eduphoria - Current Instructor	CBA1	CBA2	CBA1	CBA2	CBA1	CBA2	CBA1

Campus Assessment Dashboard Links

Links to other dashboards go here.

This dashboard provides insight into the District's enrollment counts.

The data is refreshed nightly and reflects the previous day enrollment.

Enrollment by Student Groups such as Low Income, English Language Learners and Special Ed are included.

Student Enrollment		Attendance Rate		
School Year	Student Count	School Year	Attendance Rate	
2023	4,469	2023	88.14%	
Students/Discipline Events		Students with Suspensions		
School Year	Student Count	School Year	Student Count	
2023	579	2023	284	
Filters		Students Absent		
Chronic Absenteeism		Date Absent	Student Count	
Class Of		2023-05-26	15	
Disability				
Dyslexia Services		Period Attendance		
Dyslexia Services Indic...		Date Absent	Course Period	Student Count
Gender		2023-01-18	1	225
Grade Level		2023-01-18	2	287
LEP		2023-01-18	3	133
Low Income		2023-01-18	4	164
View Filters		2023-01-18	5	197
No filters selected		2023-01-18	6	175
		2023-01-18	7	45
		2023-01-18	8	78
		2023-01-18	9	85
		2023-01-18	10	92

Attendance Rate

A focused district effort

A constant reminder

A plan going forward.

Thank you!

